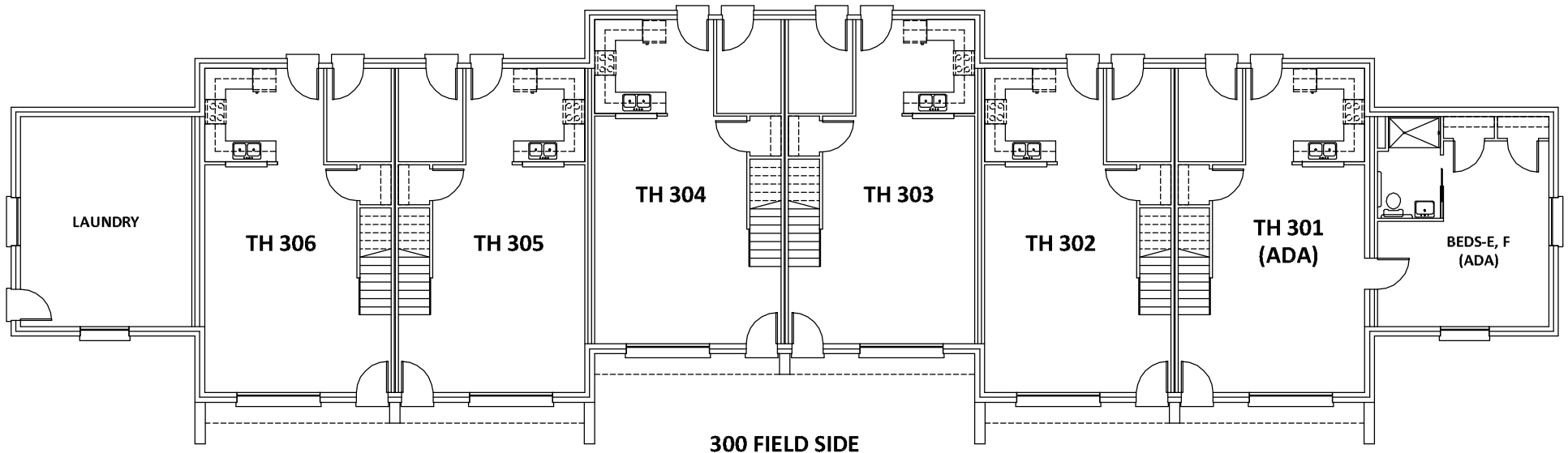


300 FIELD SIDE

SECOND FLOOR

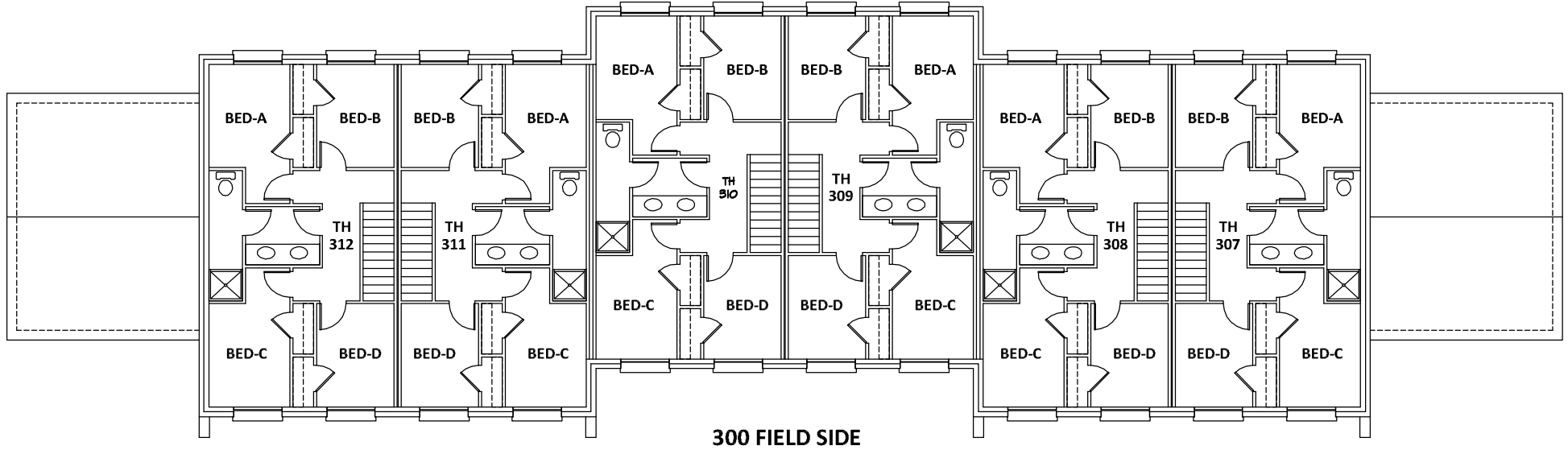
TOWNHOUSE 301-306



300 FIELD SIDE

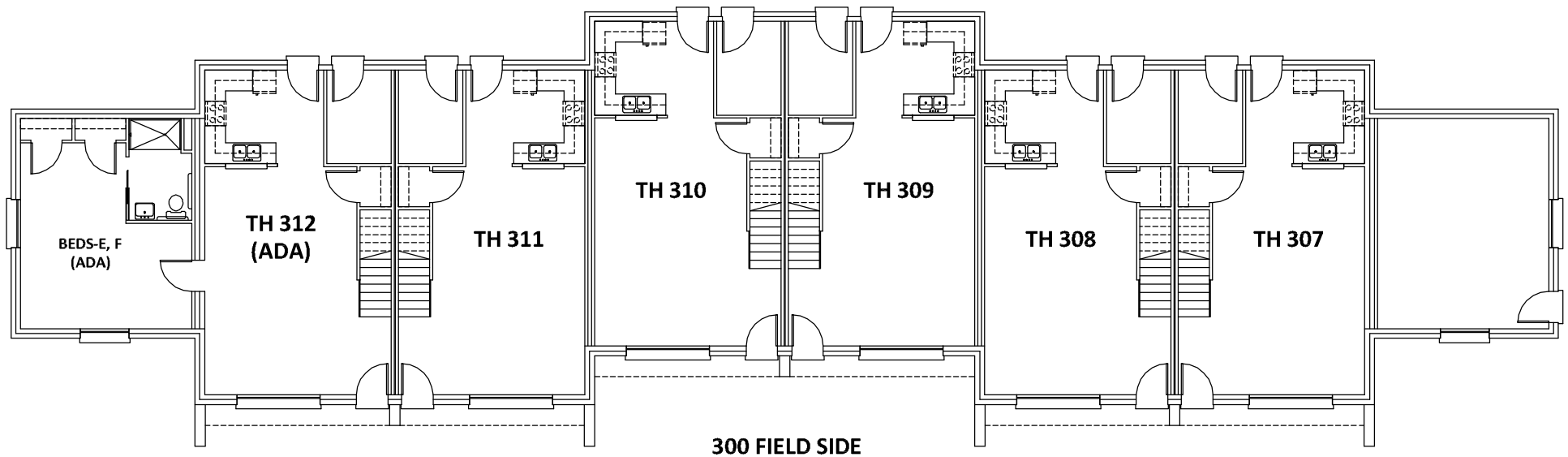
FIRST FLOOR

Please Note: The gender and program assignment of Townhouses changes from year to year based on numbers, class gender breakdowns, numbers in room selection processes, etc. For example, though women live in a particular townhouse one year, men may live in the same townhouse the following year; though a townhouse may be selected during the Room Selection process one year, it may be used for an approved accommodation the following year.



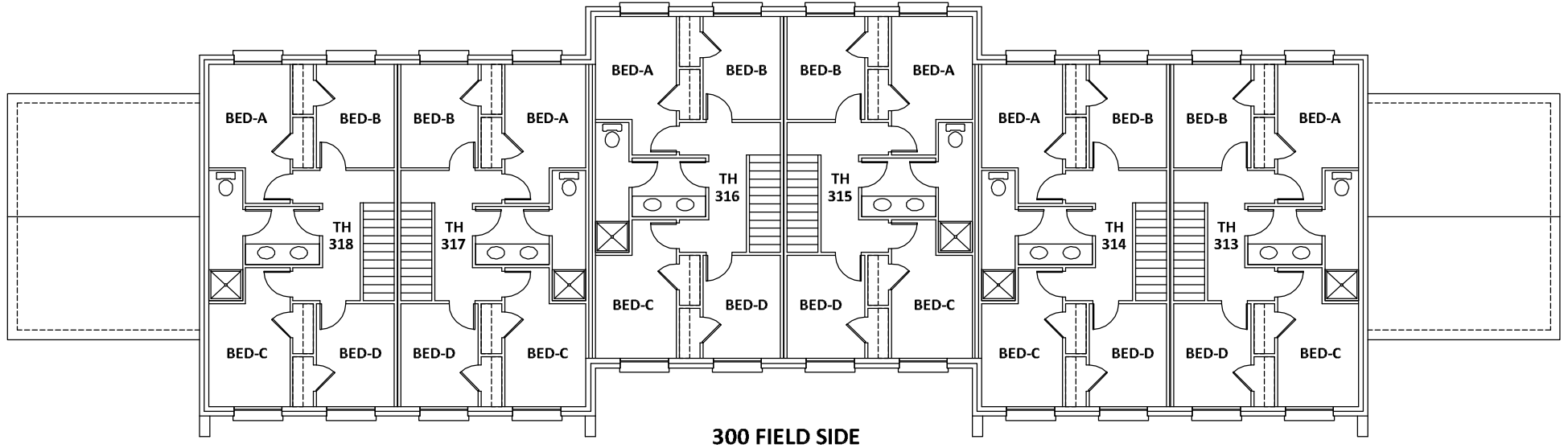
SECOND FLOOR

TOWNHOUSE 307-312



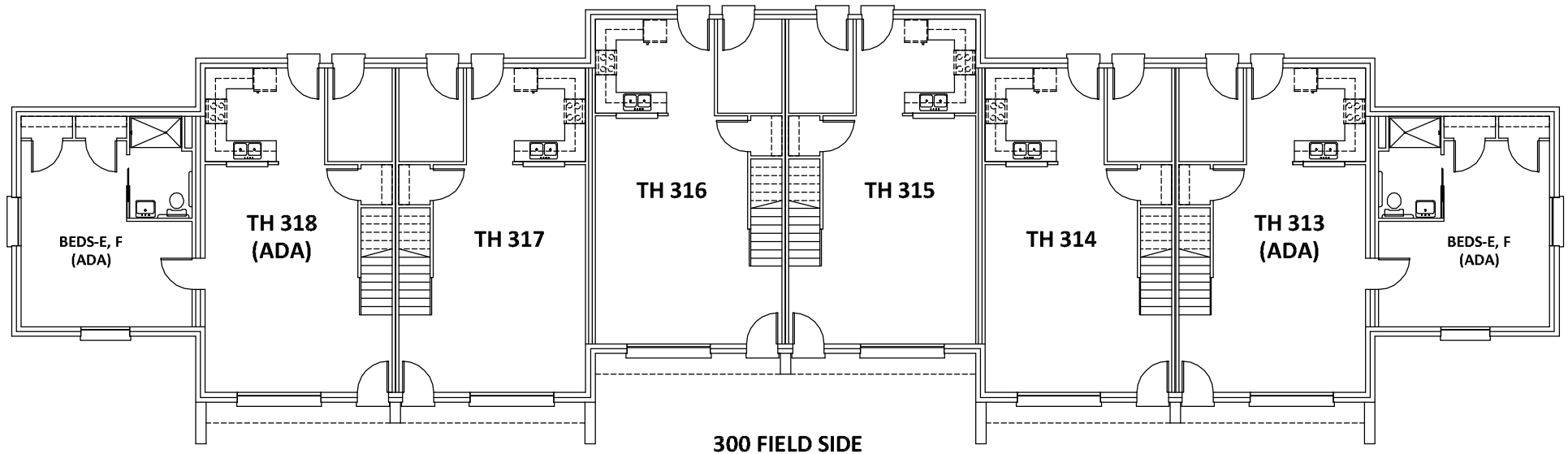
FIRST FLOOR

Please Note: The gender and program assignment of Townhouses changes from year to year based on numbers, class gender breakdowns, numbers in room selection processes, etc. For example, though women live in a particular townhouse one year, men may live in the same townhouse the following year; though a townhouse may be selected during the Room Selection process one year, it may be used for an approved accommodation the following year.



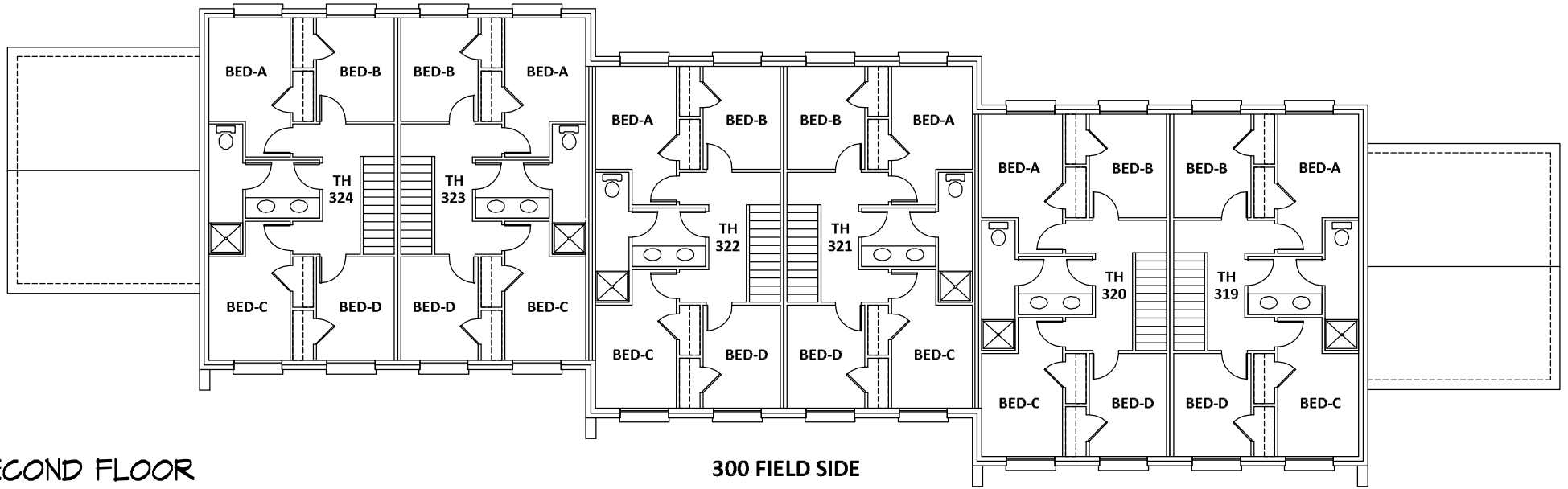
SECOND FLOOR

TOWNHOUSE 313-318



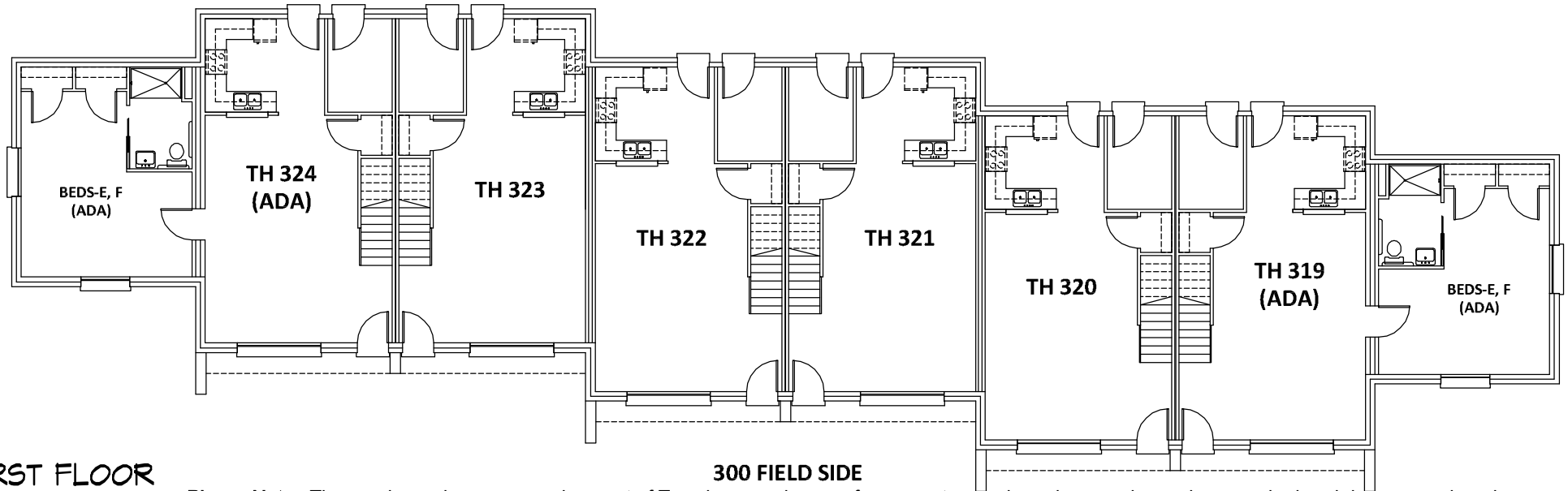
FIRST FLOOR

Please Note: The gender and program assignment of Townhouses changes from year to year based on numbers, class gender breakdowns, numbers in room selection processes, etc. For example, though women live in a particular townhouse one year, men may live in the same townhouse the following year; though a townhouse may be selected during the Room Selection process one year, it may be used for an approved accommodation the following year.



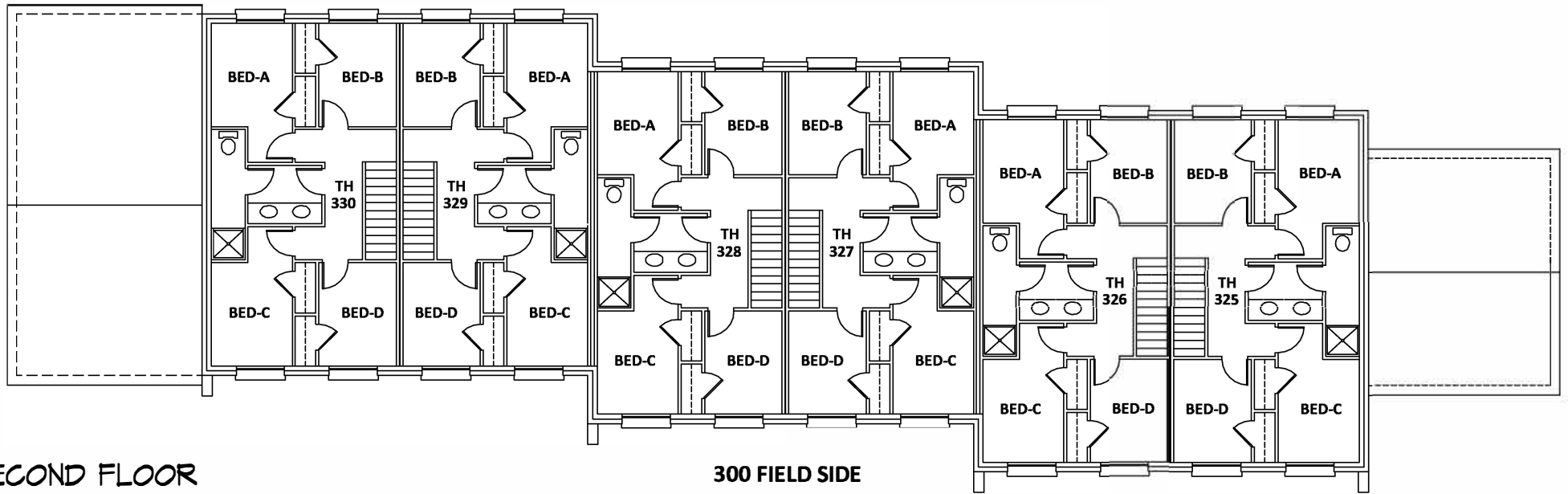
SECOND FLOOR

TOWNHOUSE 319-324



FIRST FLOOR

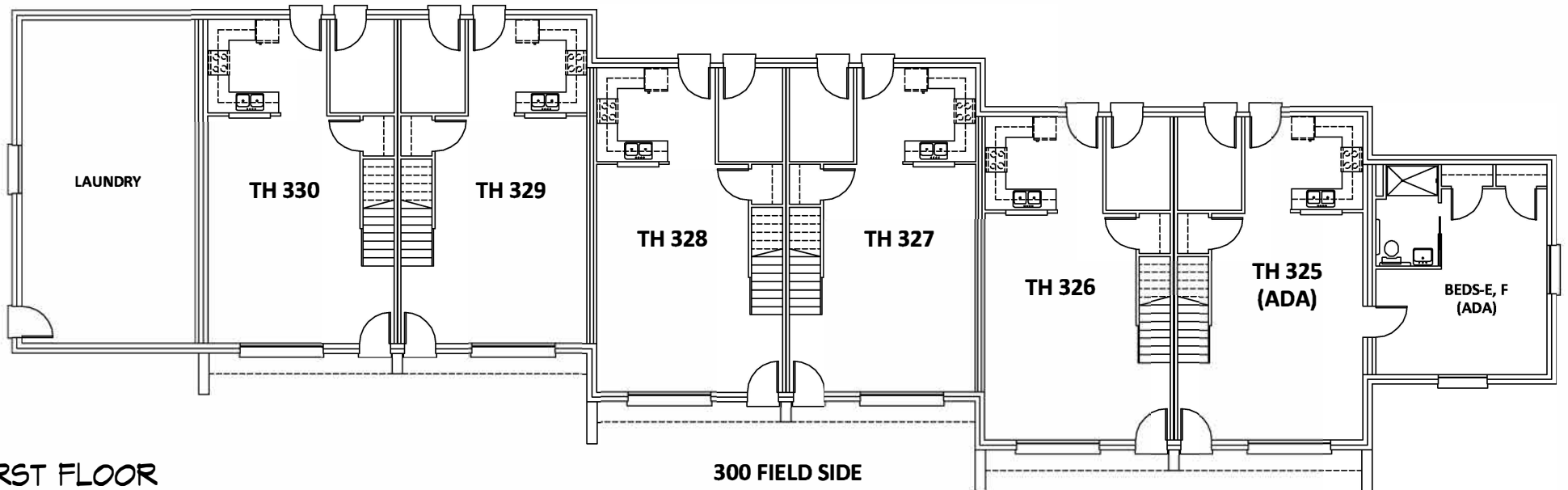
Please Note: The gender and program assignment of Townhouses changes from year to year based on numbers, class gender breakdowns, numbers in room selection processes, etc. For example, though women live in a particular townhouse one year, men may live in the same townhouse the following year; though a townhouse may be selected during the Room Selection process one year, it may be used for an approved accommodation the following year.



SECOND FLOOR

300 FIELD SIDE

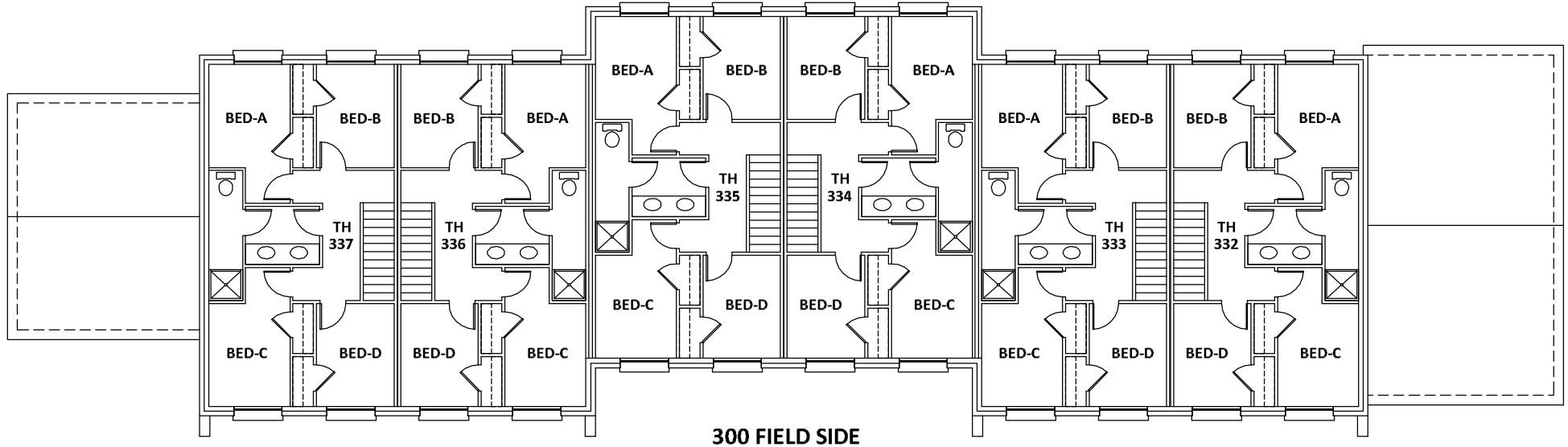
TOWNHOUSE 325-330



FIRST FLOOR

300 FIELD SIDE

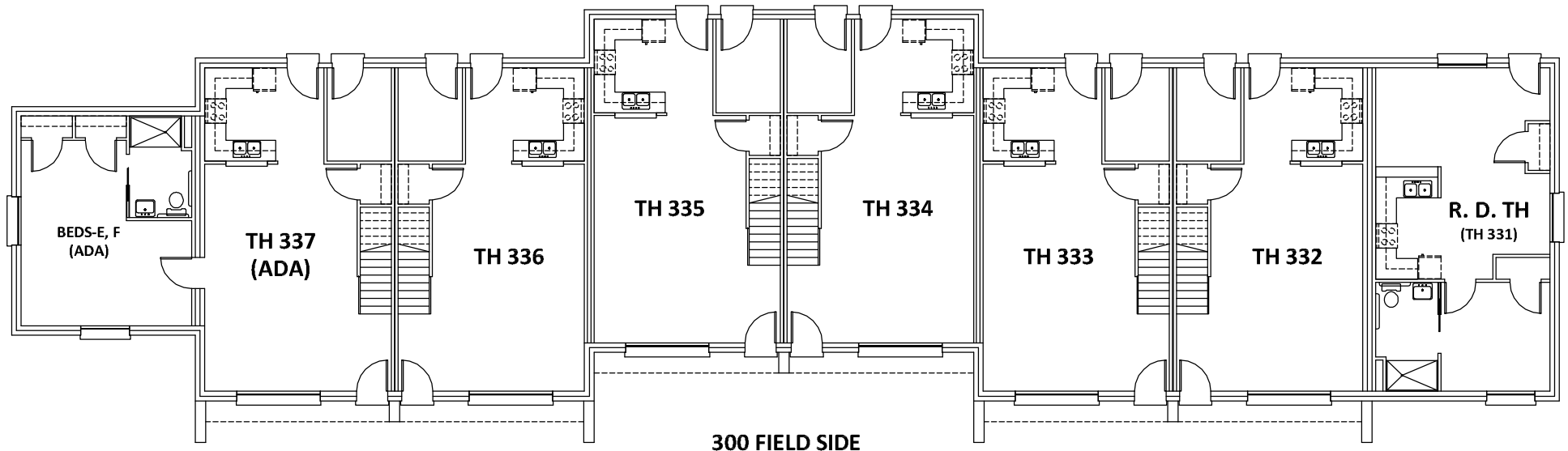
Please Note: The gender and program assignment of Townhouses changes from year to year based on numbers, class gender breakdowns, numbers in room selection processes, etc. For example, though women live in a particular townhouse one year, men may live in the same townhouse the following year; though a townhouse may be selected during the Room Selection process one year, it may be used for an approved accommodation the following year.



300 FIELD SIDE

SECOND FLOOR

TOWNHOUSE 331-337



300 FIELD SIDE

FIRST FLOOR

Please Note: The gender and program assignment of Townhouses changes from year to year based on numbers, class gender breakdowns, numbers in room selection processes, etc. For example, though women live in a particular townhouse one year, men may live in the same townhouse the following year; though a townhouse may be selected during the Room Selection process one year, it may be used for an approved accommodation the following year.