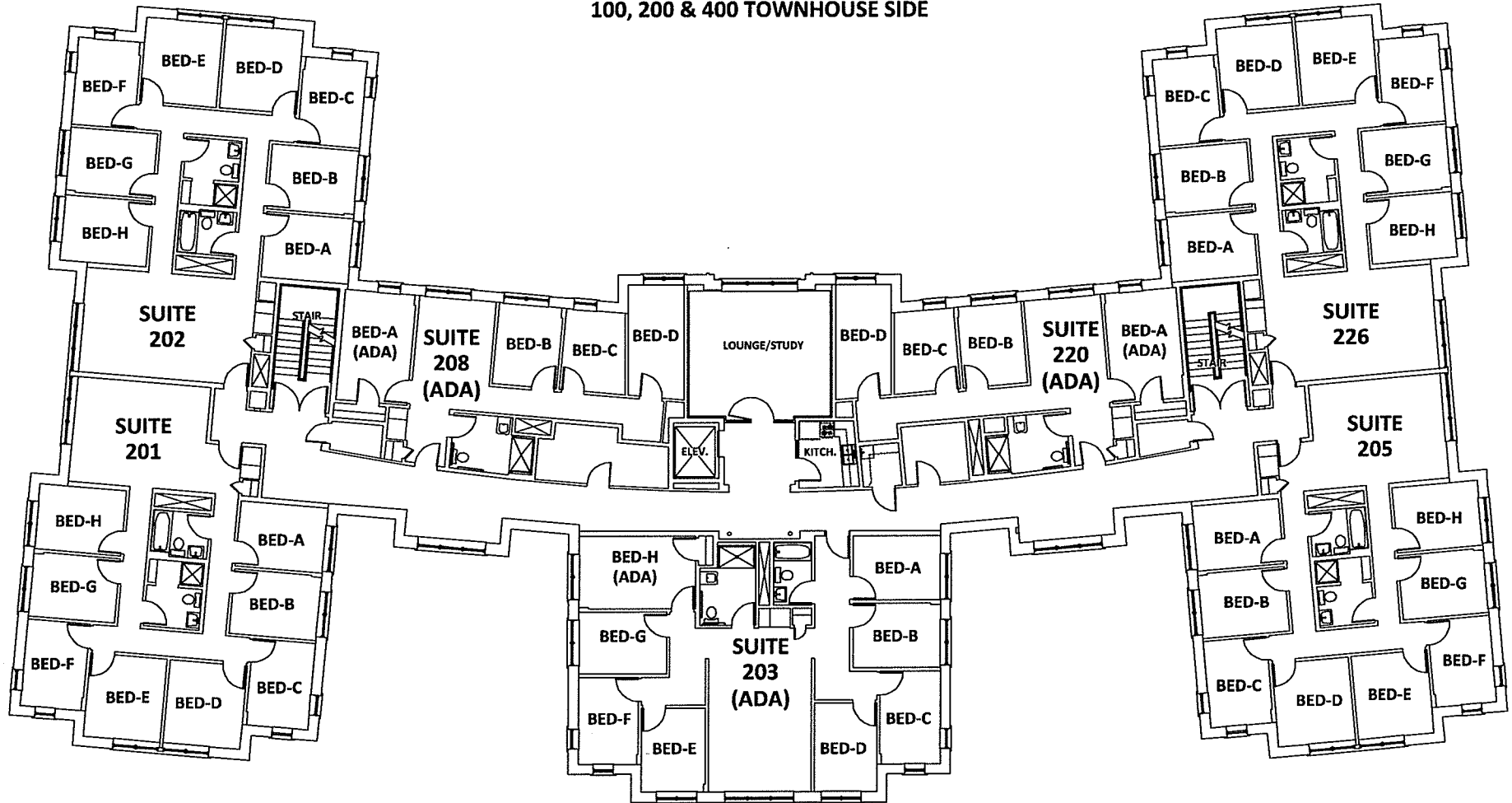


**PONTIGNY HALL  
FIRST FLOOR**

**Please Note:** The gender and program assignment of Canterbury suites changes from year to year based on numbers, class gender breakdowns, numbers in room selection processes, etc. For example, though women live in a particular suite one year, men may live in the same suite the following year; though a suite may be selected during the Honors Housing process one year, it may be used for the Singles process the following year.

100, 200 & 400 TOWNHOUSE SIDE

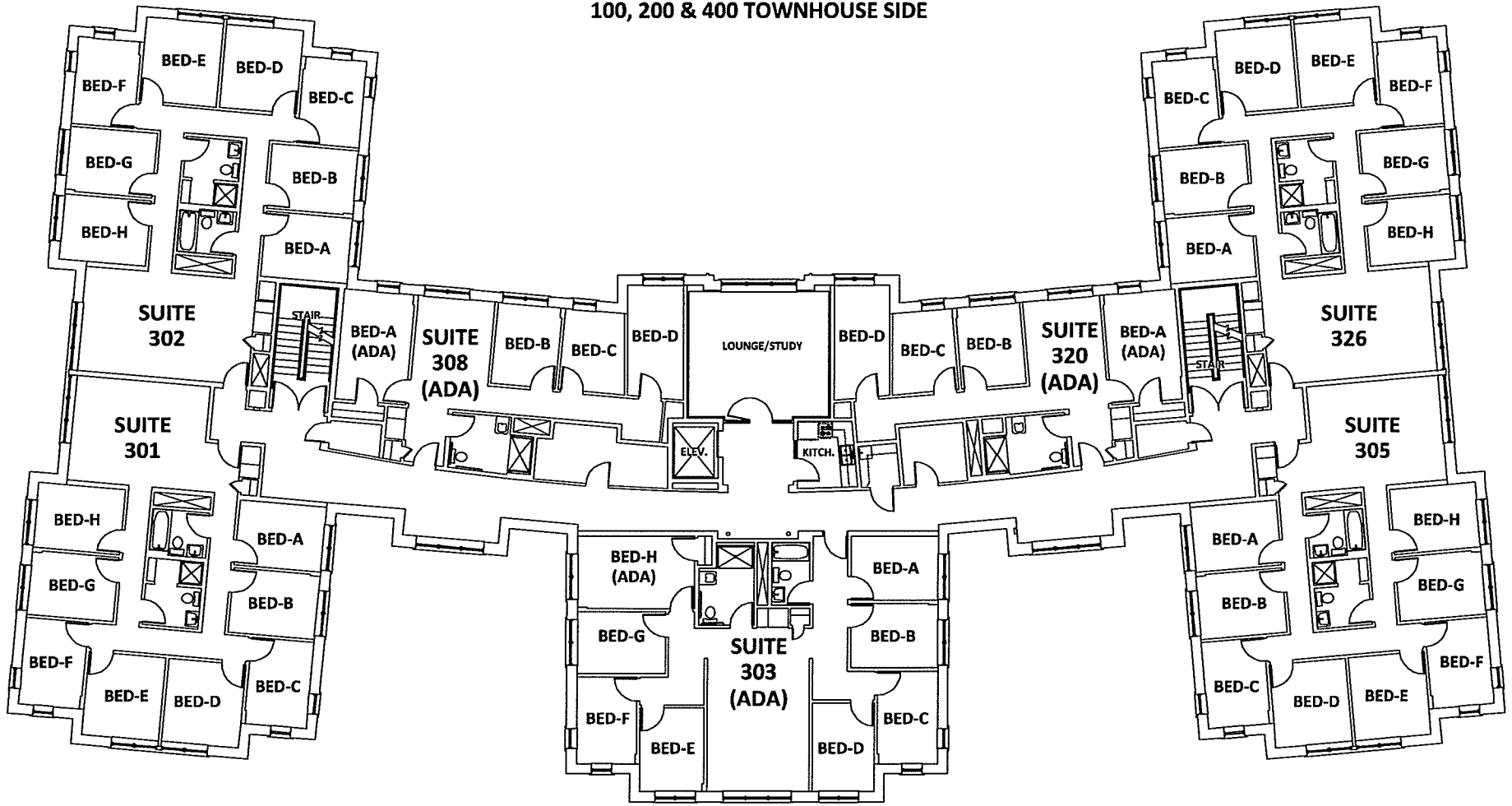


PONTIGNY HALL  
SECOND FLOOR

ROUTE 15 SIDE

**Please Note:** The gender and program assignment of Canterbury suites changes from year to year based on numbers, class gender breakdowns, numbers in room selection processes, etc. For example, though women live in a particular suite one year, men may live in the same suite the following year; though a suite may be selected during the Honors Housing process one year, it may be used for the Singles process the following year.

100, 200 & 400 TOWNHOUSE SIDE



PONTIGNY HALL  
THIRD FLOOR

ROUTE 15 SIDE

**Please Note:** The gender and program assignment of Canterbury suites changes from year to year based on numbers, class gender breakdowns, numbers in room selection processes, etc. For example, though women live in a particular suite one year, men may live in the same suite the following year; though a suite may be selected during the Honors Housing process one year, it may be used for the Singles process the following year.