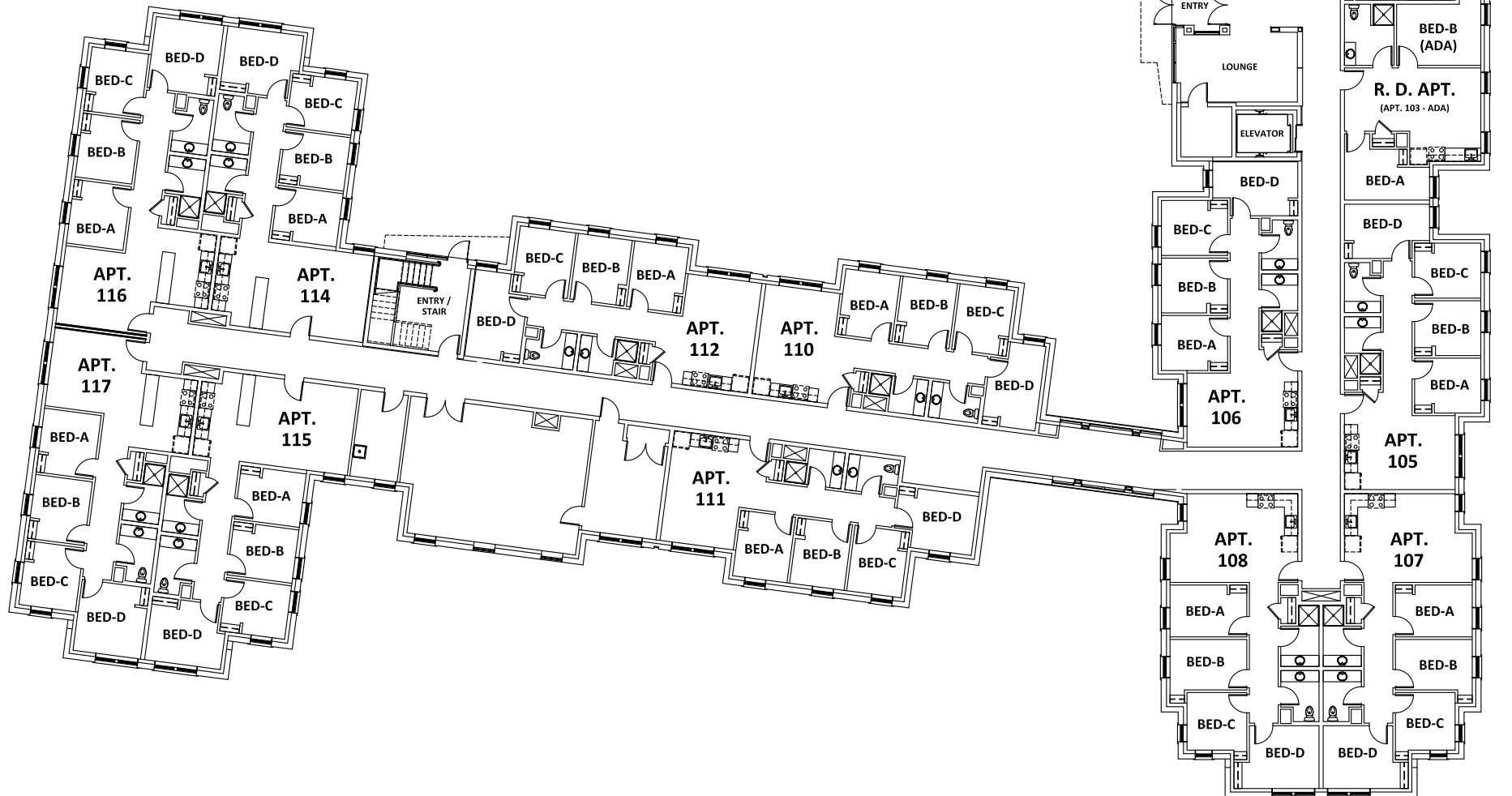


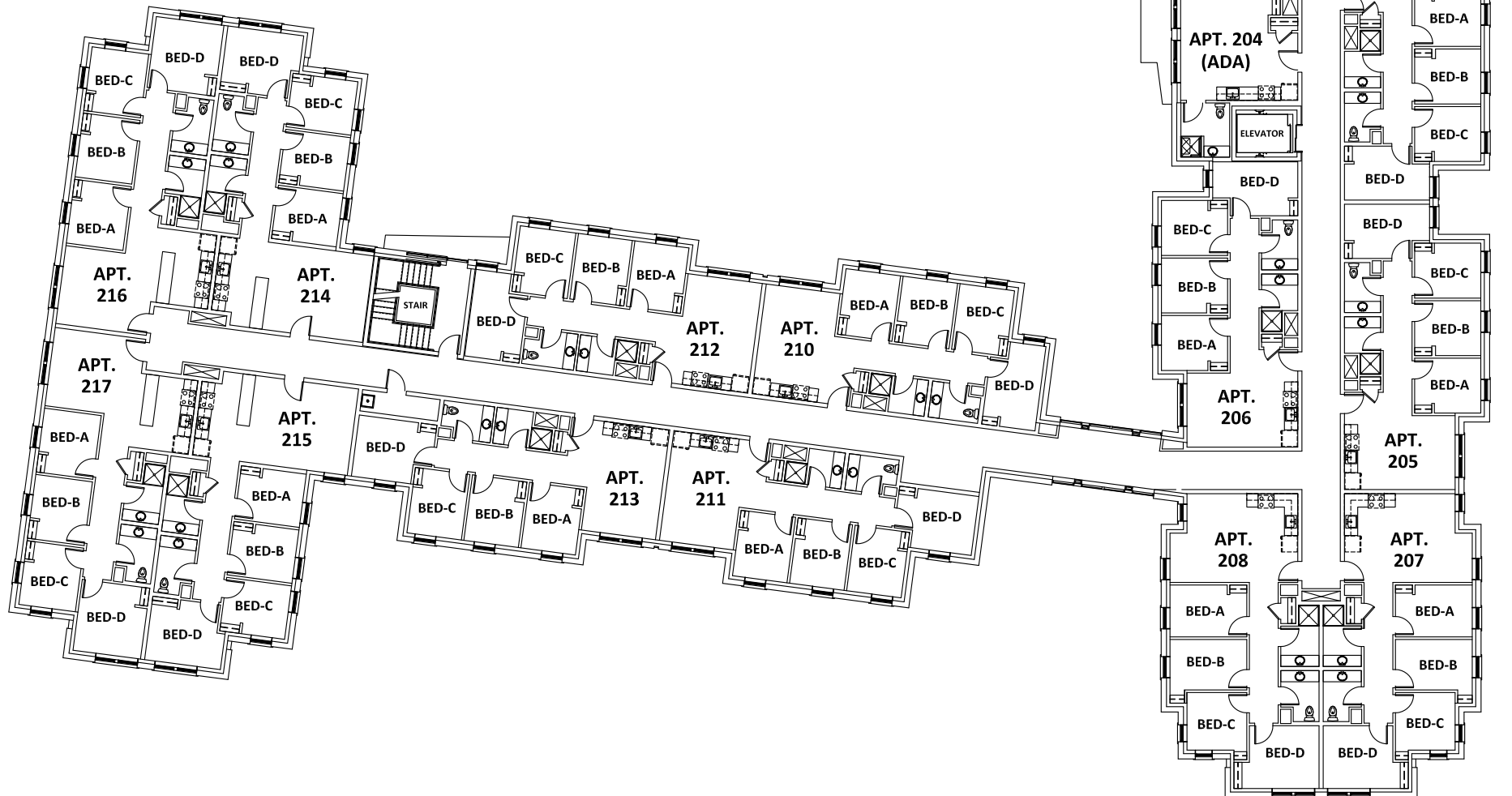
CRONOQUE HALL FIRST FLOOR

Please Note: The gender and program assignment of Cronoque apartments changes from year to year based on numbers, class gender breakdowns, numbers in room selection processes, etc. For example, though women live in a particular apartment one year, men may live in the same apartment the following year; though an apartment may be selected during the Singles process one year, it may be used for the Group process the following year.



CRONOQUE HALL SECOND FLOOR

Please Note: The gender and program assignment of Cronoque apartments changes from year to year based on numbers, class gender breakdowns, numbers in room selection processes, etc. For example, though women live in a particular apartment one year, men may live in the same apartment the following year; though an apartment may be selected during the Singles process one year, it may be used for the Group process the following year.



CRONOQUE HALL THIRD FLOOR

Please Note: The gender and program assignment of Cronoque apartments changes from year to year based on numbers, class gender breakdowns, numbers in room selection processes, etc. For example, though women live in a particular apartment one year, men may live in the same apartment the following year; though an apartment may be selected during the Singles process one year, it may be used for the Group process the following year.

