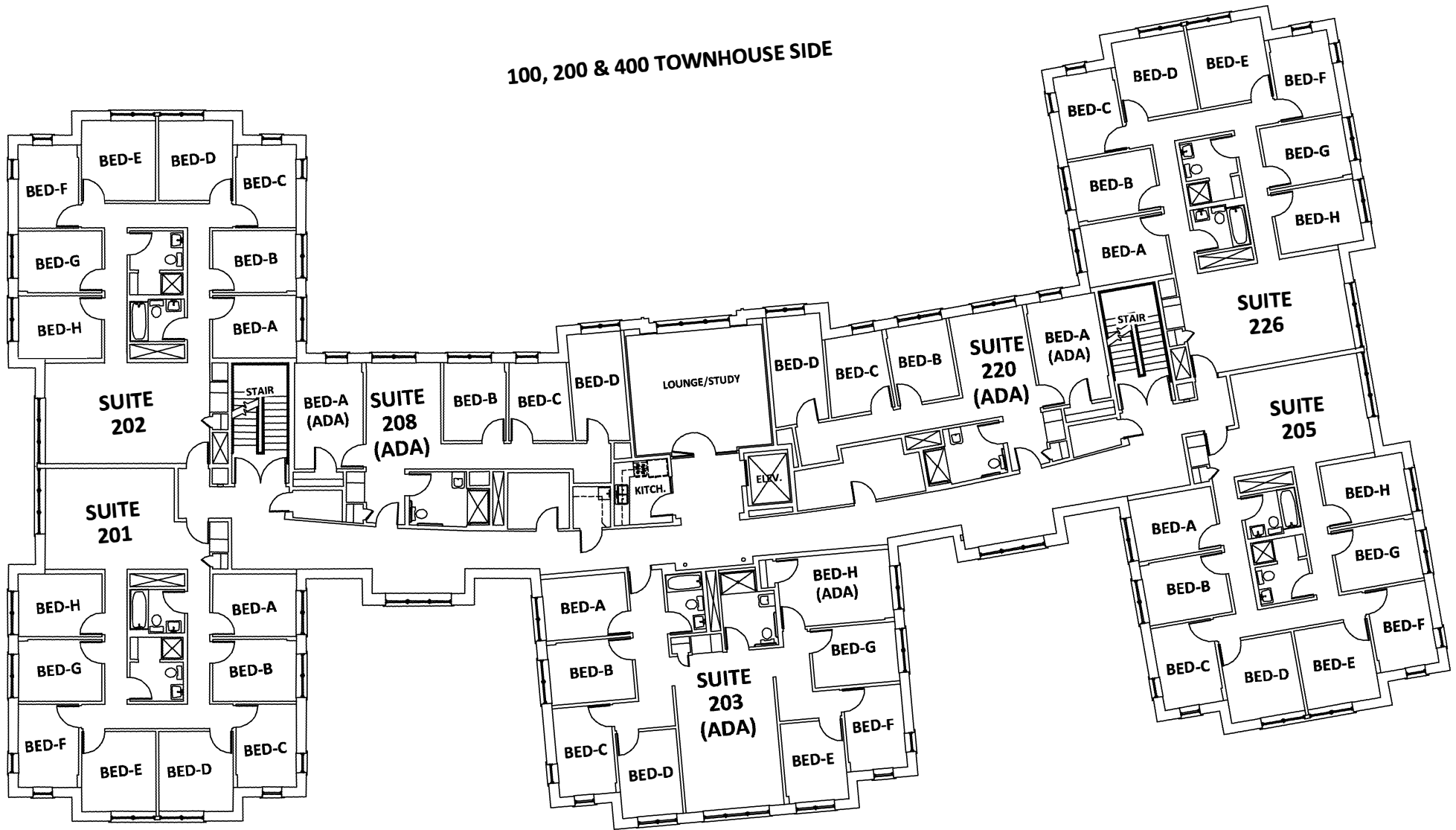


**CASHMAN HALL
FIRST FLOOR**

Please Note: The gender and program assignment of Cashman suites changes from year to year based on numbers, class gender breakdowns, numbers in room selection processes, etc. For example, though women live in a particular suite one year, men may live in the same suite the following year; though a suite may be selected during the Honors Housing process one year, it may be used for the Singles process the following year.

100, 200 & 400 TOWNHOUSE SIDE

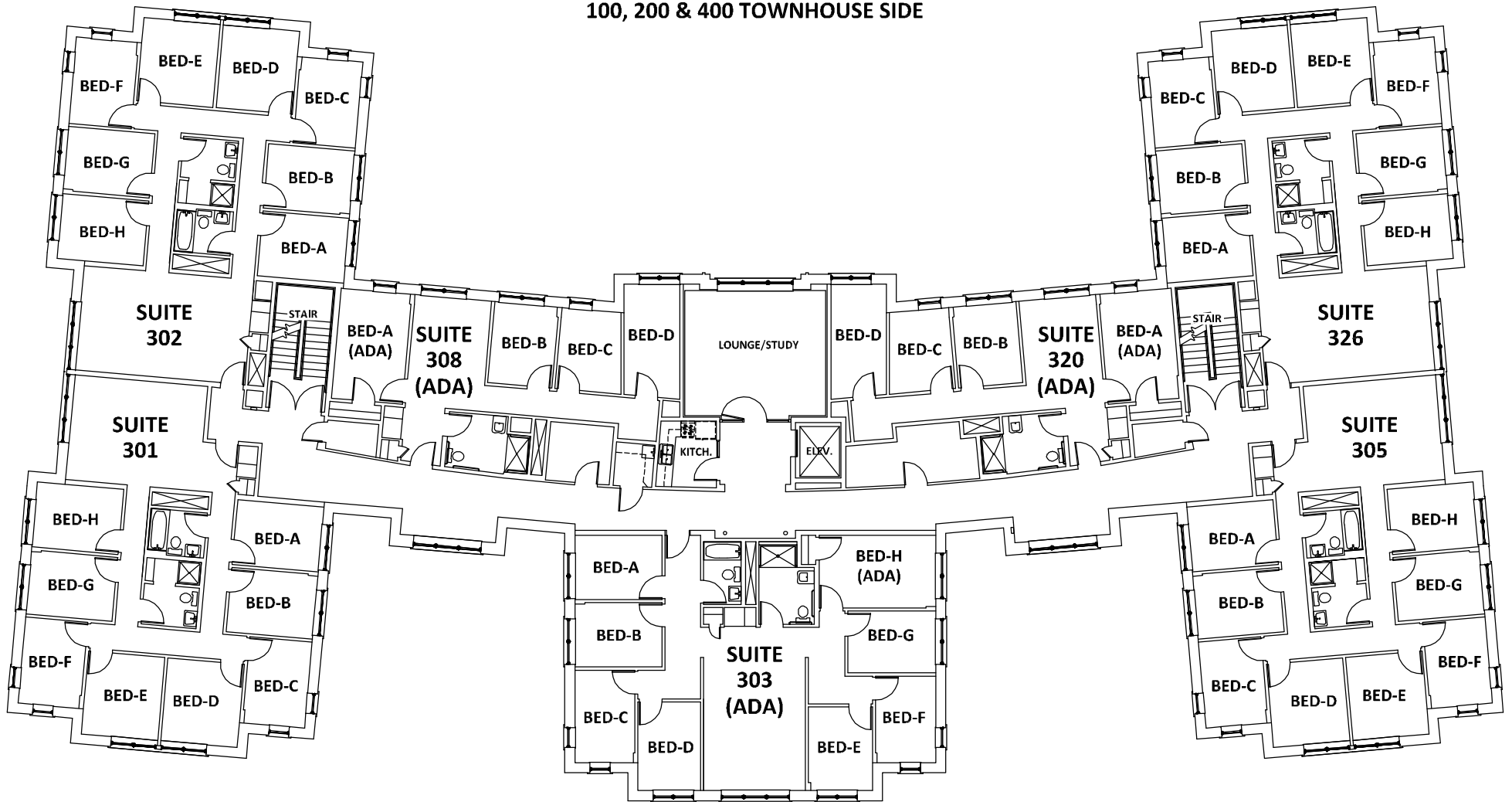


ROUTE 15 SIDE

CASHMAN HALL SECOND FLOOR

Please Note: The gender and program assignment of Canterbury suites changes from year to year based on numbers, class gender breakdowns, numbers in room selection processes, etc. For example, though women live in a particular suite one year, men may live in the same suite the following year; though a suite may be selected during the Honors Housing process one year, it may be used for the Singles process the following year.

100, 200 & 400 TOWNHOUSE SIDE



CASHMAN HALL
THIRD FLOOR

ROUTE 15 SIDE

Please Note: The gender and program assignment of Canterbury suites changes from year to year based on numbers, class gender breakdowns, numbers in room selection processes, etc. For example, though women live in a particular suite one year, men may live in the same suite the following year; though a suite may be selected during the Honors Housing process one year, it may be used for the Singles process the following year.