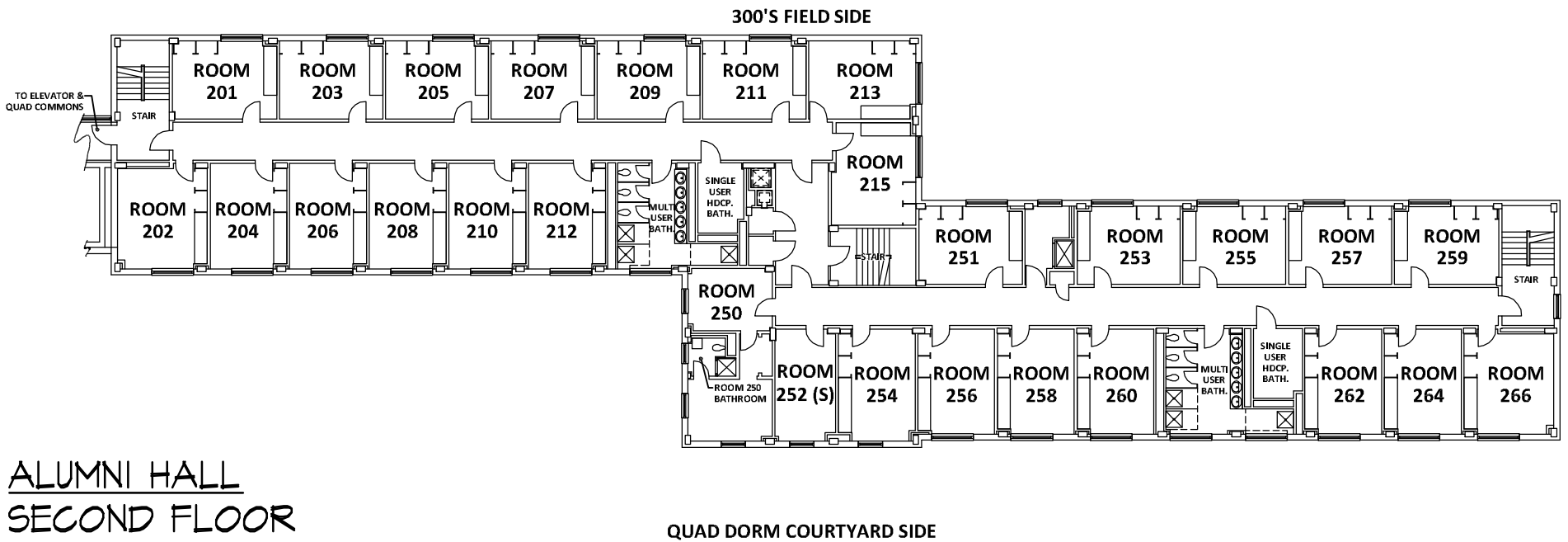


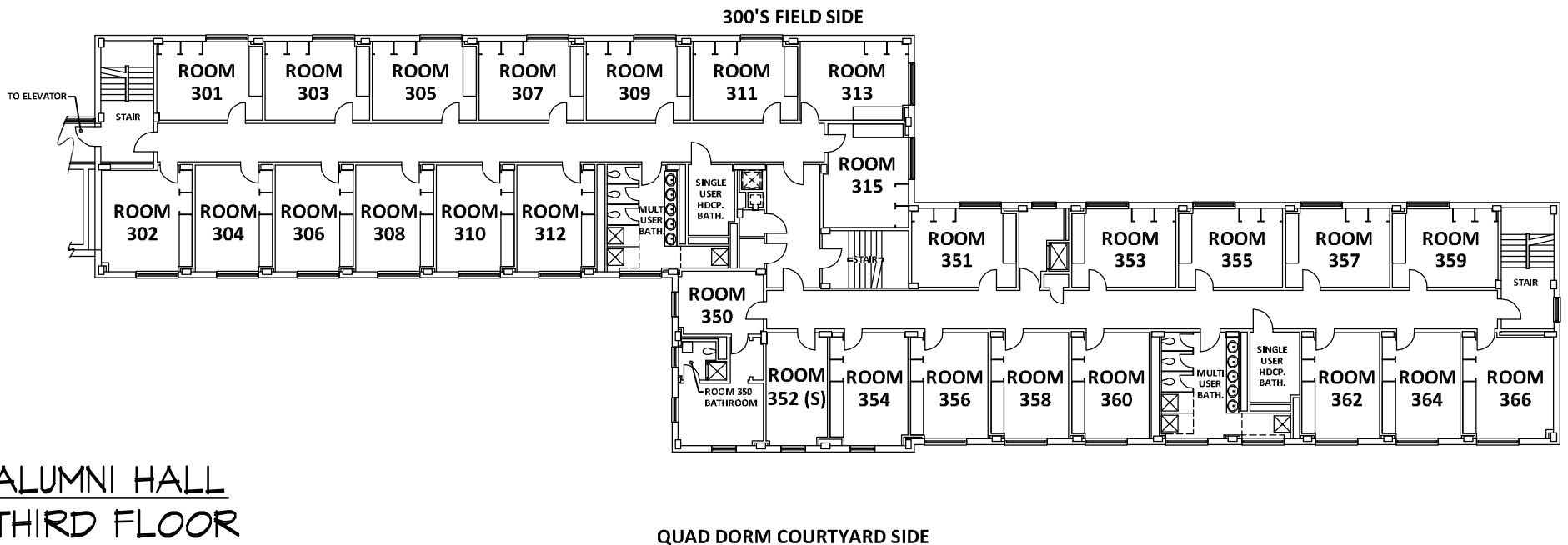
**ALUMNI HALL  
FIRST FLOOR**

**Please Note:** The gender and program assignment of Alumni Hall rooms changes from year to year based on numbers, class gender breakdowns, numbers in room selection processes, etc. For example, though women live on a particular floor one year, men may live on the same floor the following year; though a wing may be assigned to new students over the summer one year, it could be utilized for upper-class students in room selection the following year.



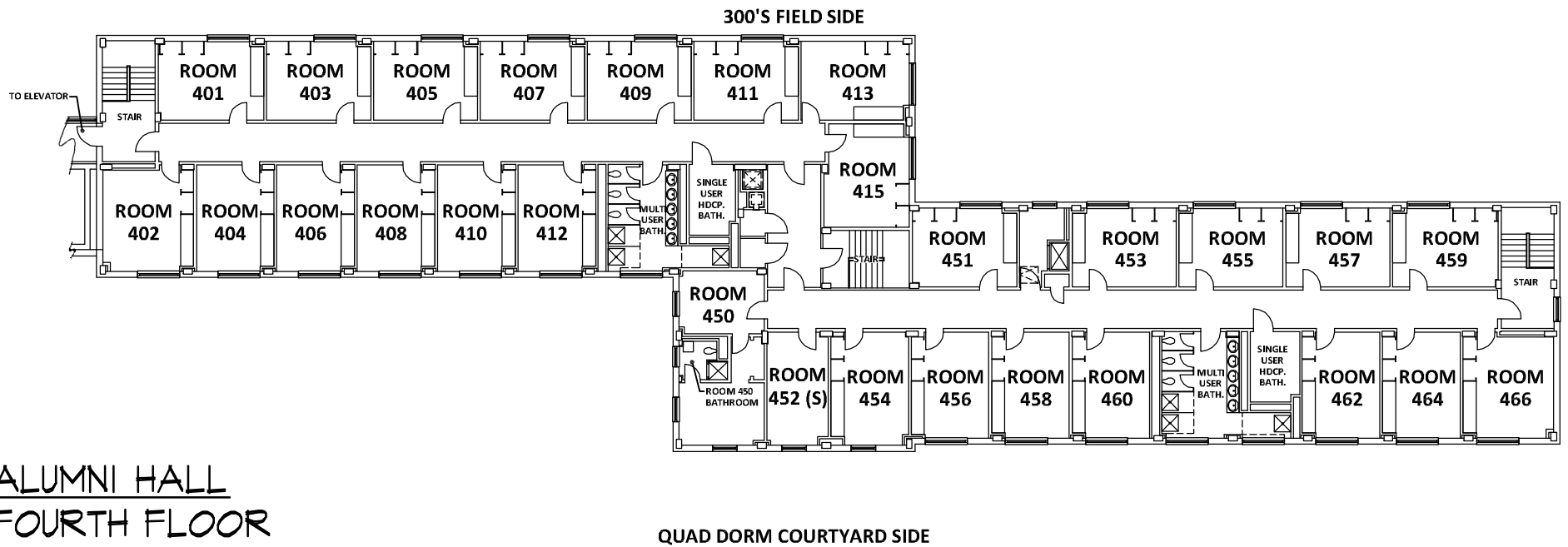
## ALUMNI HALL SECOND FLOOR

**Please Note:** The gender and program assignment of Alumni Hall rooms changes from year to year based on numbers, class gender breakdowns, numbers in room selection processes, etc. For example, though women live on a particular floor one year, men may live on the same floor the following year; though a wing may be assigned to new students over the summer one year, it could be utilized for upper-class students in room selection the following year.



ALUMNI HALL  
THIRD FLOOR

**Please Note:** The gender and program assignment of Alumni Hall rooms changes from year to year based on numbers, class gender breakdowns, numbers in room selection processes, etc. For example, though women live on a particular floor one year, men may live on the same floor the following year; though a wing may be assigned to new students over the summer one year, it could be utilized for upper-class students in room selection the following year.



## ALUMNI HALL FOURTH FLOOR

**Please Note:** The gender and program assignment of Alumni Hall rooms changes from year to year based on numbers, class gender breakdowns, numbers in room selection processes, etc. For example, though women live on a particular floor one year, men may live on the same floor the following year; though a wing may be assigned to new students over the summer one year, it could be utilized for upper-class students in room selection the following year.